

State of Wyoming Corner Record

(In compliance with the **CORNER PERPETUATION AND FILING ACT**, Wyoming Statutes, 1997 Section 33-29-140 et. seq., and the Rules and Regulations of the Board of Professional Engineers and Professional Land Surveyors)

Reverse side of this form may be used if more space is needed.

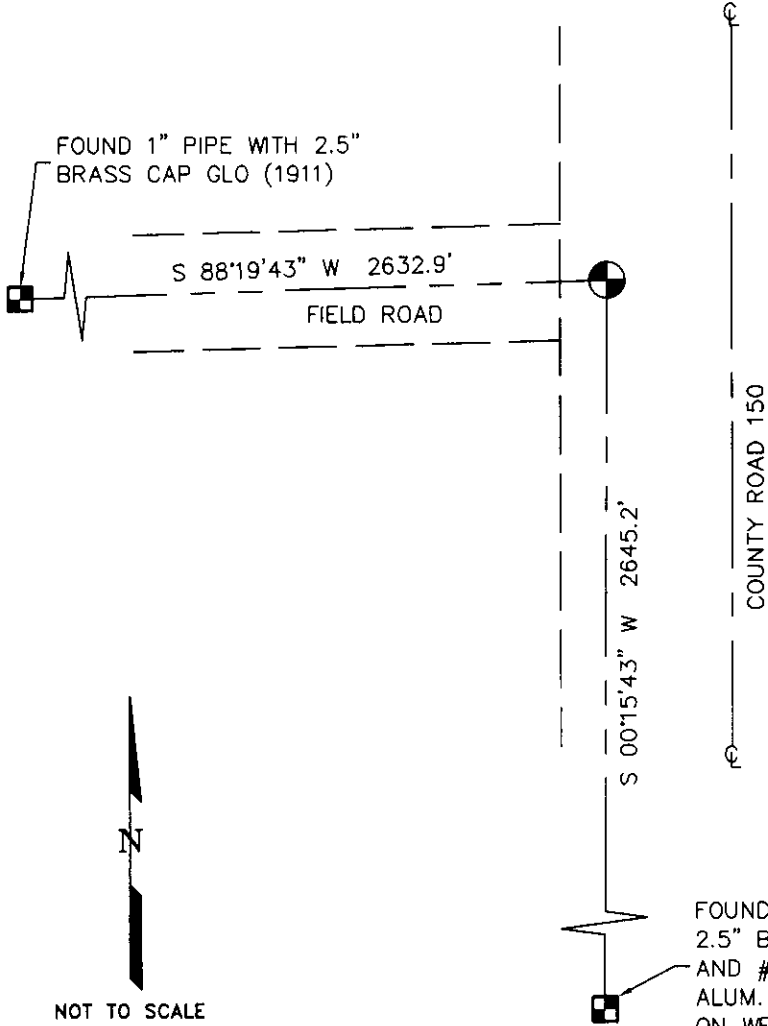
Record of original survey and citation of source of historical information (if corner is lost or obliterated). Description of corner monumentation evidence found and/or monument and accessories established to perpetuate the location of this corner. Sketch of relative location of monument, accessories, and reference points with course and distance to adjacent corner(s) (if determined in this survey). Method and rationale for reestablishment of lost or obliterated corner.

GLO RECORD: "SET AN IRON POST, 3 FT. LONG, 2 INS. DIAM., 2 1/2 FT. IN THE GROUND, FOR COR. OF SEC. 4, 5, 8 AND 9, AND MARK ON THE BRASS CAP ON THE POST."

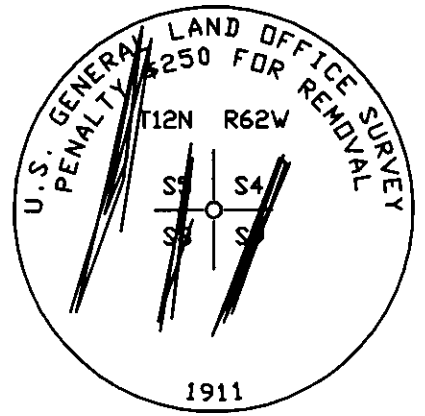
MONUMENT FOUND: FOUND 2" PIPE WITH 2 1/2" BRASS CAP STAMPED U.S. GLO 1911 (PARTIALLY ILLEGIBLE) AS SHOWN BELOW MONUMENT WAS RECOVERED BENT TO THE NORTH, 2 1/2'± BELOW GRAVEL ROAD SURFACE.

MONUMENT SET: DUG OUT EXISTING MONUMENT, STRAIGHTENED AND REPLACED MONUMENT IN FOUND POSITION 0.9'± BELOW GRAVEL ROAD SURFACE.

REFERENCES: REFERENCED ADJACENT MONUMENTS AS SHOWN IN SKETCH BELOW.



RECORDED 8/10/2010 AT 1:04 PM REC# 550375 BK# 2177 PG# 908
 DEBRA K. LATHROP, CLERK OF LARAMIE COUNTY, WY PAGE 7 OF 1



Found Monument Inscription

FOUND 1" PIPE BENT WITH
 2.5" BRASS CAP GLO (1911)
 AND #6 REBAR WITH 2.5"
 ALUM. CAP LS 4522 (2010)
 ON WEST SIDE OF 1" PIPE

L-10-13

Date of Field Work: 7/20/10

Office Reference: 2010022 (LAT40)

Cross Index Plat

Firm/Agency, Address

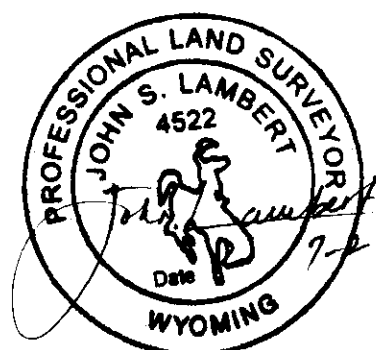
Lambert Land Consulting, LLC
417 South Whitcomb Street
Fort Collins, Colorado 80521

This corner record was prepared by me or under my direction and supervision.

Telephone Number: 970-217-2190

SEAL & SIGNATURE

	1	2	3	4	5	6	7	8	9	10	11	12	13	14	15	16	17	18	19	20	21	22	23	24	25
A	+	+	+	+	+	+	+	+	+	+	+	+	+	+	+	+	+	+	+	+	+	+	+	+	+
B	+	6	+	+	5	+	+	+	4	+	+	+	3	+	+	+	2	+	+	+	1	+	+	+	+
C	+	+	+	+	+	+	+	+	+	+	+	+	+	+	+	+	+	+	+	+	+	+	+	+	+
D	+	+	+	+	+	+	+	+	+	+	+	+	+	+	+	+	+	+	+	+	+	+	+	+	+
E	+	+	+	+	+	+	+	+	+	+	+	+	+	+	+	+	+	+	+	+	+	+	+	+	+
F	+	+	+	+	+	+	+	+	+	+	+	+	+	+	+	+	+	+	+	+	+	+	+	+	+
G	+	+	7	+	+	8	+	+	9	+	+	+	10	+	+	+	11	+	+	+	12	+	+	+	+
H	+	+	+	+	+	+	+	+	+	+	+	+	+	+	+	+	+	+	+	+	+	+	+	+	+
J	+	+	+	+	+	+	+	+	+	+	+	+	+	+	+	+	+	+	+	+	+	+	+	+	+
K	+	+	+	+	+	+	+	+	+	+	+	+	+	+	+	+	+	+	+	+	+	+	+	+	+
L	+	+	+	+	+	+	+	+	+	+	+	+	+	+	+	+	+	+	+	+	+	+	+	+	+
M	+	+	+	+	+	+	+	+	+	+	+	+	+	+	+	+	+	+	+	+	+	+	+	+	+
N	+	+	+	+	+	+	+	+	+	+	+	+	+	+	+	+	+	+	+	+	+	+	+	+	+
O	+	+	+	+	+	+	+	+	+	+	+	+	+	+	+	+	+	+	+	+	+	+	+	+	+
P	+	+	+	+	+	+	+	+	+	+	+	+	+	+	+	+	+	+	+	+	+	+	+	+	+
Q	+	+	+	+	+	+	+	+	+	+	+	+	+	+	+	+	+	+	+	+	+	+	+	+	+
R	+	+	+	+	+	+	+	+	+	+	+	+	+	+	+	+	+	+	+	+	+	+	+	+	+
S	+	+	+	+	+	+	+	+	+	+	+	+	+	+	+	+	+	+	+	+	+	+	+	+	+
T	+	+	+	+	+	+	+	+	+	+	+	+	+	+	+	+	+	+	+	+	+	+	+	+	+
U	+	+	+	+	+	+	+	+	+	+	+	+	+	+	+	+	+	+	+	+	+	+	+	+	+
V	+	+	+	+	+	+	+	+	+	+	+	+	+	+	+	+	+	+	+	+	+	+	+	+	+
W	+	+	+	+	+	+	+	+	+	+	+	+	+	+	+	+	+	+	+	+	+	+	+	+	+
X	+	+	+	+	+	+	+	+	+	+	+	+	+	+	+	+	+	+	+	+	+	+	+	+	+
Y	+	+	+	+	+	+	+	+	+	+	+	+	+	+	+	+	+	+	+	+	+	+	+	+	+
Z	+	+	+	+	+	+	+	+	+	+	+	+	+	+	+	+	+	+	+	+	+	+	+	+	+



Corner Name Northeast Corner Section 8, T 12 N, R 62 W, 6th P.M.

Cross-Index No.: E-8